

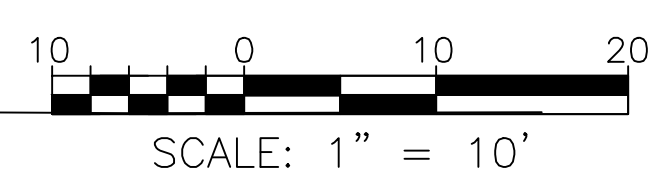
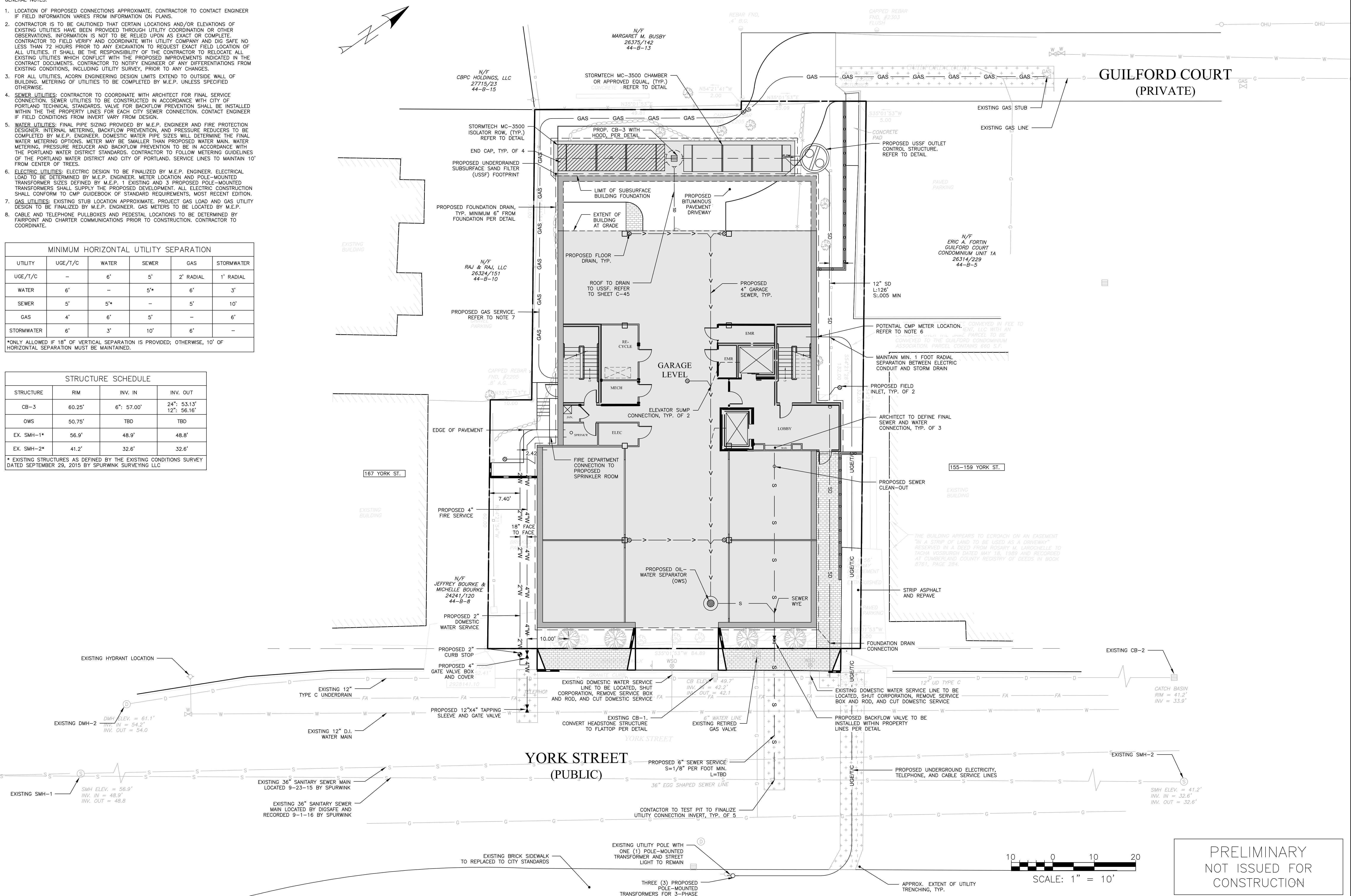
- GENERAL NOTES:
- LOCATION OF PROPOSED CONNECTIONS APPROXIMATE. CONTRACTOR TO CONTACT ENGINEER IF FIELD INFORMATION VARIES FROM INFORMATION ON PLANS.
 - CONTRACTOR IS TO BE CAUTIONED THAT CERTAIN LOCATIONS AND/OR ELEVATIONS OF EXISTING UTILITIES HAVE BEEN PROVIDED THROUGH UTILITY COORDINATION OR OTHER OBSERVATIONS. INFORMATION IS NOT TO BE RELIED UPON AS EXACT OR COMPLETE. CONTRACTOR TO FIELD VERIFY AND COORDINATE WITH UTILITY COMPANY AND DIG SAFE NO LESS THAN 72 HOURS PRIOR TO ANY EXCAVATION TO REQUEST EXACT FIELD LOCATION OF ALL UTILITIES. IT SHALL BE THE RESPONSIBILITY OF THE CONTRACTOR TO RELOCATE ALL EXISTING UTILITIES WHICH CONFLICT WITH THE PROPOSED IMPROVEMENTS INDICATED IN THE CONTRACT DOCUMENTS. CONTRACTOR TO NOTIFY ENGINEER OF ANY DIFFERENTIATIONS FROM EXISTING CONDITIONS, INCLUDING UTILITY SURVEY, PRIOR TO ANY CHANGES.
 - FOR ALL UTILITIES, ACORN ENGINEERING DESIGN LIMITS EXTEND TO OUTSIDE WALL OF BUILDING. METERING OF UTILITIES TO BE COMPLETED BY M.E.P. UNLESS SPECIFIED OTHERWISE.
 - SEWER UTILITIES: CONTRACTOR TO COORDINATE WITH ARCHITECT FOR FINAL SERVICE CONNECTION. SEWER UTILITIES TO BE CONSTRUCTED IN ACCORDANCE WITH CITY OF PORTLAND TECHNICAL STANDARDS. VALVE FOR BACKFLOW PREVENTION SHALL BE INSTALLED WITHIN THE PROPERTY LINES FOR EACH CITY SEWER CONNECTION. CONTACT ENGINEER IF FIELD CONDITIONS FROM INVERT VARY FROM DESIGN.
 - WATER UTILITIES: FINAL PIPE SIZING PROVIDED BY M.E.P. ENGINEER AND FIRE PROTECTION DESIGNER. INTERNAL METERING, BACKFLOW PREVENTION, AND PRESSURE REDUCERS TO BE COMPLETED BY M.E.P. ENGINEER. DOMESTIC WATER PIPE SIZES WILL DETERMINE THE FINAL WATER METERING OPTIONS. METER MAY BE SMALLER THAN PROPOSED WATER MAIN. WATER METERING, PRESSURE REDUCER AND BACKFLOW PREVENTION TO BE IN ACCORDANCE WITH THE PORTLAND WATER DISTRICT STANDARDS. CONTRACTOR TO FOLLOW METERING GUIDELINES OF THE PORTLAND WATER DISTRICT AND CITY OF PORTLAND. SERVICE LINES TO MAINTAIN 10' FROM CENTER OF TREES.
 - ELECTRIC UTILITIES: ELECTRIC DESIGN TO BE FINALIZED BY M.E.P. ENGINEER. ELECTRICAL LOAD TO BE DETERMINED BY M.E.P. ENGINEER. METER LOCATION AND POLE-MOUNTED TRANSFORMER SIZES DEFINED BY M.E.P. 1 EXISTING AND 3 PROPOSED POLE-MOUNTED TRANSFORMERS SHALL SUPPLY THE PROPOSED DEVELOPMENT. ALL ELECTRIC CONSTRUCTION SHALL CONFORM TO CMP GUIDEBOOK OF STANDARD REQUIREMENTS, MOST RECENT EDITION.
 - GAS UTILITIES: EXISTING STUB LOCATION APPROXIMATE. PROJECT GAS LOAD AND GAS UTILITY DESIGN TO BE FINALIZED BY M.E.P. ENGINEER. GAS METERS TO BE LOCATED BY M.E.P.
 - CABLE AND TELEPHONE PULLBOXES AND PEDESTAL LOCATIONS TO BE DETERMINED BY FAIRPOINT AND CHARTER COMMUNICATIONS PRIOR TO CONSTRUCTION. CONTRACTOR TO COORDINATE.

MINIMUM HORIZONTAL UTILITY SEPARATION					
UTILITY	UGE/T/C	WATER	SEWER	GAS	STORMWATER
UGE/T/C	-	6'	5'	2' RADIAL	1' RADIAL
WATER	6'	-	5*	6'	3'
SEWER	5'	5*	-	5'	10'
GAS	4'	6'	5'	-	6'
STORMWATER	6'	3'	10'	6'	-

*ONLY ALLOWED IF 18" OF VERTICAL SEPARATION IS PROVIDED; OTHERWISE, 10' OF HORIZONTAL SEPARATION MUST BE MAINTAINED.

STRUCTURE SCHEDULE			
STRUCTURE	RIM	INV. IN	INV. OUT
CB-3	60.25'	6": 57.00'	24": 53.13' 12": 56.16'
OWS	50.75'	TBD	TBD
EX. SMH-1*	56.9'	48.9'	48.8'
EX. SMH-2*	41.2'	32.6'	32.6'

* EXISTING STRUCTURES AS DEFINED BY THE EXISTING CONDITIONS SURVEY DATED SEPTEMBER 29, 2015 BY SPURWINK SURVEYING LLC



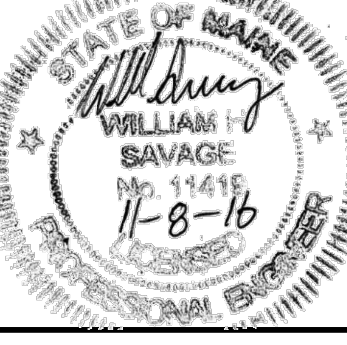
PRELIMINARY
NOT ISSUED FOR
CONSTRUCTION

ISSUED FOR	BY	DATE
ABILITY TO SERVE	WHS	8/3/16
UTILITY REVIEW	WHS	12/2/16
PRELIM. APP.	WHS	11/8/16

UTILITY PLAN
PROJECT NAME: 161 YORK STREET REDEVELOPMENT
CLIENT: YORK STREET REDEVELOPMENT, LLC
42 MARKET STREET, PORTLAND, MAINE 04101

ACORN ENGINEERING, INC.
158 BANGOR ST. PORTLAND, MAINE 04102
(207) 775-2655

FILE: 1074_CIVIL
JN: 1074
SCALE: 1" = 10'
DESIGNED BY: WHS
DRAWN BY: SJL
CHECKED BY: WHS



DRAWING NO. C-20